

SIEMENS



SMARTER PROTECTION MATTERS

Cerberus PRO Panels, network and accessories

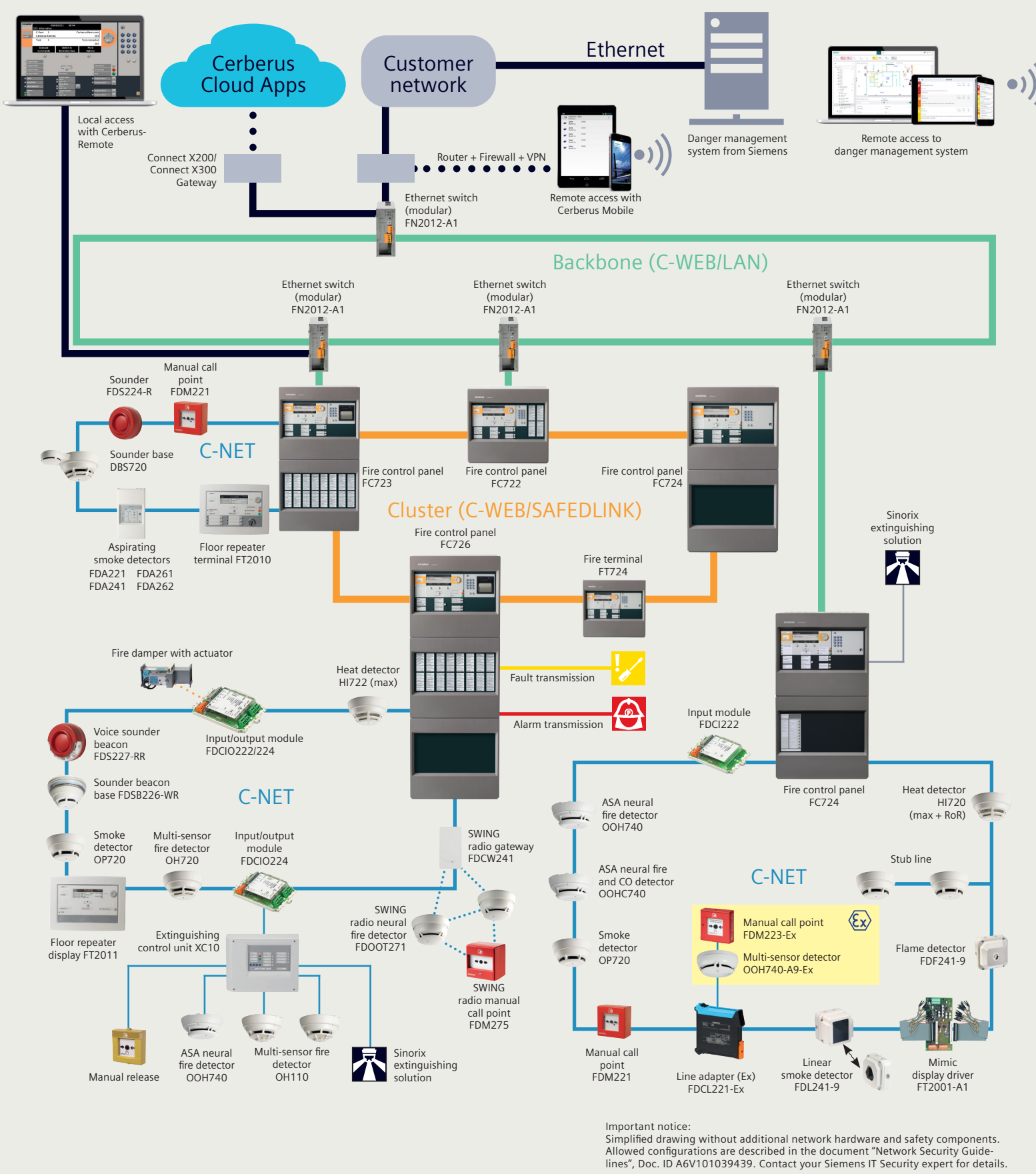
Planing Tool

Published by
Siemens Switzerland Ltd 2021
Building Technologies Division
Thalackerstrasse 18
6900 Zug
Switzerland
Tel +41 58 724 24 24
Article no. 8T_0149_EN (Status 10/2021)
Subject to changes and errors. The information given in this document only
contains general descriptions and/or performance features which may not always
specifically reflect those described, or which may undergo modification in the
course of further development of the products. The requested performance features
are binding only when they are expressly agreed upon in the concluded contract.
© Siemens Switzerland Ltd, 2021

Smart infrastructure intelligently connects energy systems,
buildings and industries to adapt and evolve the way we live
and work.
We work together with customers and partners to create an
ecosystem that intuitively responds to the needs of
people and helps customers to better use resources.
It helps our customers to thrive, communities to progress
and supports sustainable development.
Creating environments that care.
siemens.com/smart-infrastructure

Cerberus PRO – Because smarter protection matters

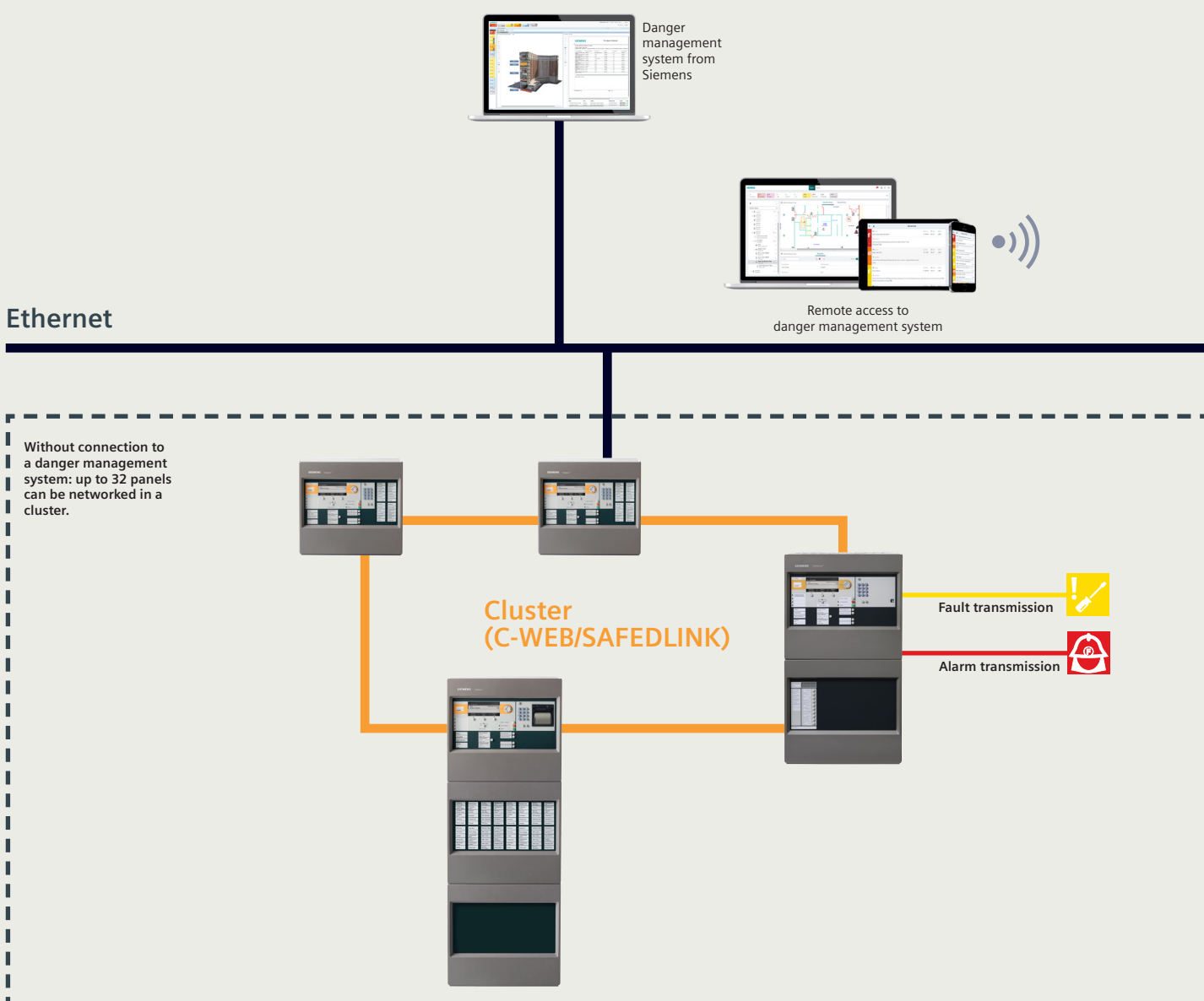
IoT-enabled fire control panels, clever fire detectors, smart peripheral devices:
Our products & solutions allow you to protect your building and its occupants all
year-round, connect with it anytime from anywhere via the Cerberus Cloud Apps,
and sustain undisturbed places all day, every day for peace of mind. The overview below
demonstrated the most important components.



Important notice:
Simplified drawing without additional network hardware and safety components.
Allowed configurations are described in the document "Network Security Guide-
lines", Doc. ID A6V101039439. Contact your Siemens IT Security expert for details.

Topology 1

Up to 16 panels can be networked in a cluster (C-WEB/SAFEDLINK) – if connected
to a danger management system. Without a danger management system, even up to
32 panels can be networked.



Characteristics of topology example
– Easy networking of panels
– Operation of panels as standalone solution or
networked with a total length of up to 1,280 km
– Data rate can be adapted to line quality

Key data
– Max. number of networkable panels: 32
– Max. number of networkable panels if
connected to a danger management
system: 16
– Max. distance between panels with
copper cable:
• without repeater: 1 km
• with repeater: 2 km
– Max. distance between panels with
fiber-optic cable:
• multi mode: 4 km
• single mode: 40 km
– Max. number of panels with
system-wide view: 5

Important notice:
Simplified drawing without additional network hardware and
safety components. Allowed configurations are described in the
document "Network Security Guidelines", Doc. ID A6V101039439.
Contact your Siemens IT Security expert for details.

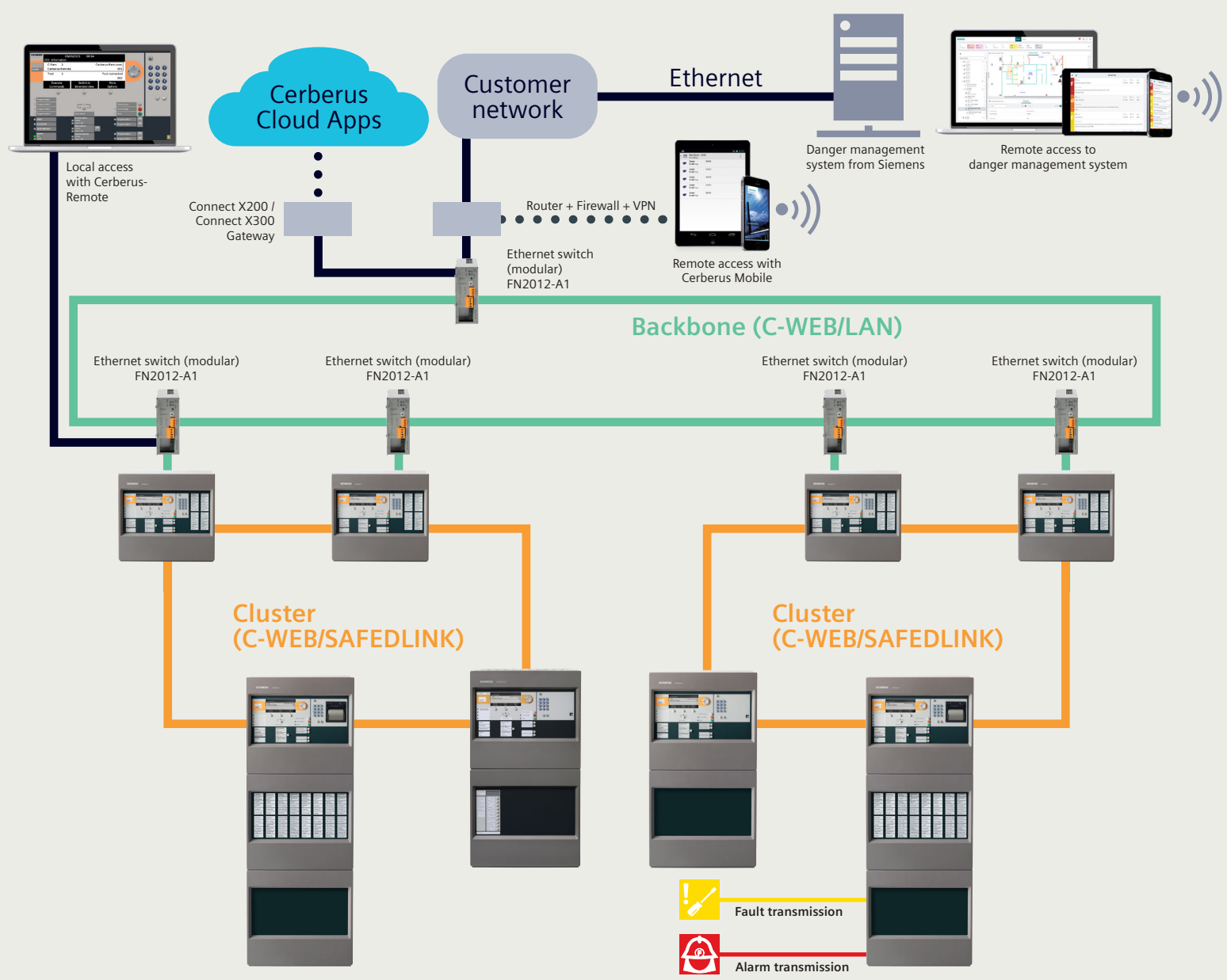
Panel overview compact

	FC721-ZZ1-YZ	FC722-ZZ1-YZ	FC722-ZA1-ZE	FC724-ZA1-ZE	FT24-ZZ
Housing Eco					
Mains voltage	– AC 97...127 V – AC 196...253 V	– AC 97...127 V – AC 196...253 V	– AC 97...127 V – AC 196...253 V	– AC 97...127 V – AC 196...253 V	–
Power supply	70 W	70 W	150 W	150 W	option PSU 70 W
Operating voltage	DC 21...28.6 V	DC 21...28.6 V	DC 21...28.4 V	DC 21...28.4 V	DC 21...28.4 V
Operating current	max. 2.5 A	max. 2.5 A	max. 5 A	max. 5 A	125 mA
Battery capacity	2x 12 V, 7 Ah	2x 12 V, 7...12 Ah	2x 12 V, 26 Ah	2x 12 V, 26 Ah	option 2x 12 V, 7 Ah
Emergency power supply	up to 72 h ¹⁾	up to 72 h ¹⁾	up to 72 h	up to 72 h	up to 72 h
Connectable detector series	Cerberus PRO FD720 (C-NET)	Cerberus PRO FD720 (C-NET)	Cerberus PRO FD720 (C-NET)	Cerberus PRO FD720 (C-NET)	–
Number of lines – C-NET integrated (with loop extension) – Stub lines	1 2	2 (4) 4 (8)	2 (4) 4 (8)	4 (8) 8 (16)	–
Number of addresses	max. 126	max. 252	max. 252	max. 504	–
Networkable	–	✓	✓	✓	✓
Integrated inputs/outputs – Relay outputs • RT alarm • RT fault – Monitored outputs • Alarm • Fault • Horn – Freely programmable inputs/outputs	1 1 1 1 1 1 4	1 1 1 1 1 1 8	1 1 1 1 1 1 8	1 1 1 1 2 12	– – – – – – –
Operating unit	integrated	integrated	integrated	integrated	integrated
Display groups integrated, each with one red, green and yellow LED	–/up to 24	–/up to 24	–/up to 48	–/up to 48	–
Display groups optional, each with one red, green and yellow LED	up to 96 ²⁾ /–	up to 96 ²⁾ /–	up to 96/up to 96	up to 96/up to 96	up to 96 ³⁾
Plug-in position for RS232, RS485 serial ports	1	2	2	2	2
Ethernet connection RJ45	1	1	1	1	1
Dimensions (WxHxD)	430x398x80 mm	430x398x160 mm	430x796x160 mm	430x796x160 mm	430x398x80 mm
Approvals – CPR – VdS – LPCB	0786-CPR-20767 126bn	0786-CPR-20721 G209076 126bn	0786-CPR-20721 G209076 126bn	0786-CPR-20722 G209077 126bn	– G209078 126bn

¹⁾ with additional housing and power supply, ²⁾ with extra housing

Topology 2

Up to 64 panels in one EN 54-conform system with different combinations
of clusters and backbone – and with connection to a danger management system
via a customer network.



Characteristics of topology example
– EN 54-conform networking of up to 64 panels
via backbone
– Very large networks spanning long distances
– Highest system availability thanks to system-
wide redundancy
– Panels on different clusters can communicate
with each other
– Only one remote transmission to fire brigade
over entire system necessary
– Distributed building complexes can be ideally
protected
– Backbone is realized with fiber-optic cable

Key data
– Max. number of networkable panels
incl. clusters (EN 54-conform): 64
– Max. number of clusters: 14
– Max. number of networkable panels
per cluster: 16
– Number of panels with system-wide view: 5

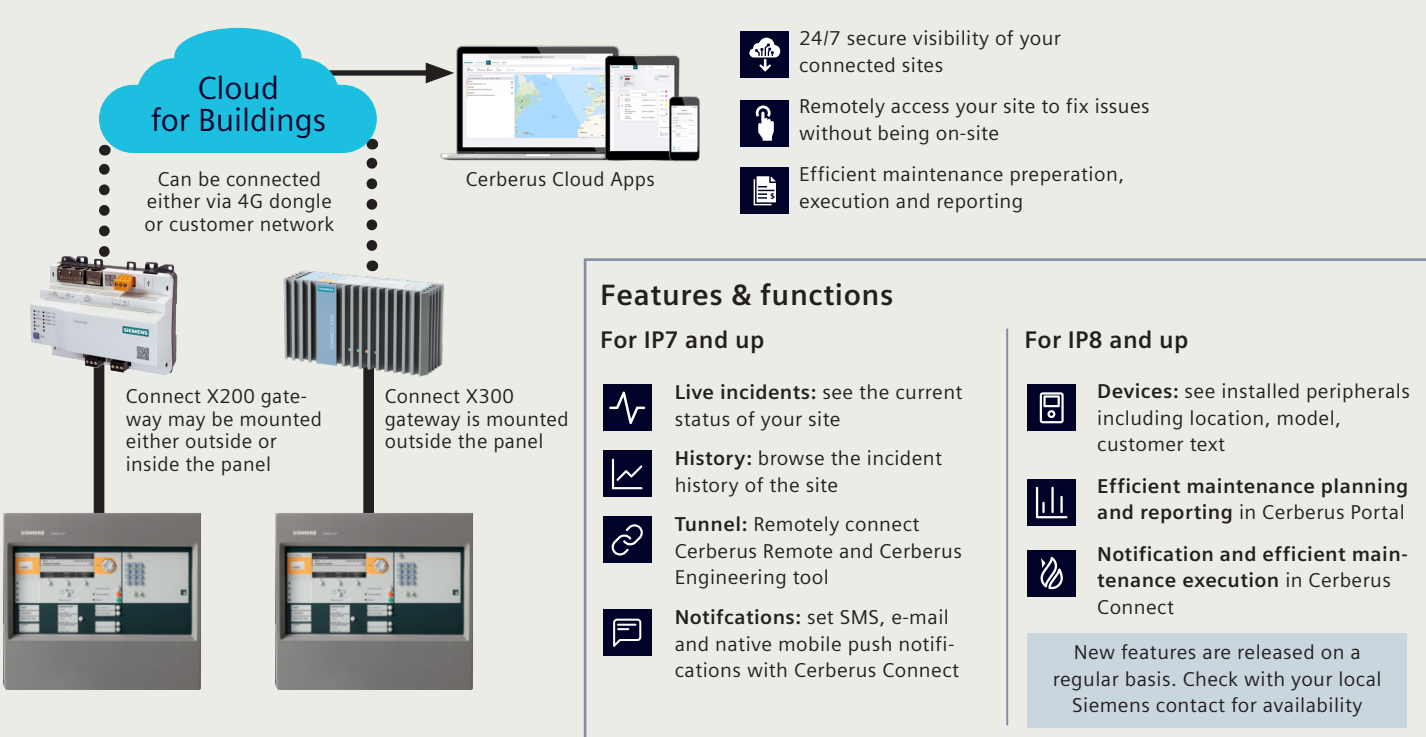
Important notice:
Simplified drawing without additional network hardware and
safety components. Allowed configurations are described in the
document "Network Security Guidelines", Doc. ID A6V101039439.
Contact your Siemens IT Security expert for details.

Panel overview modular

	FC723-ZA	FC726-ZA	Combined fire and ext. control panel
Housing Comfort			
Mains voltage	– AC 98...127 V – AC 196...253 V	– AC 98...127 V – AC 196...253 V	Consisting of: – Fire control panel – Extinguishing control kit – Extinguishing terminal Optional: – Extinguishing terminal Techn. data FC72x See FC722-ZA, FC724-ZA
Power supply	150 W	150 W	XT2001-A1
Operating voltage	DC 21...28.4 V	DC 21...28.4 V	FC722-ZA, FC724-ZA
Operating current	max. 5 A	max. 5 A	
Battery capacity	2x 12 V, 26 Ah	2x 12 V, 45 Ah	
Emergency power supply	up to 72 h	up to 72 h	
Connectable detector series	Cerberus PRO FD720 (C-NET)	Cerberus PRO FD720 (C-NET)	
Number of lines – C-NET integrated (with loop extension) – Stub lines – C-NET ext. (4 per line card)	2 (4) 4 (8) max. 8	4 (8) 8 (16) max. 20	
Number of addresses	max. 756	max. 1,512	
Networkable	✓	✓	
Integrated inputs/outputs – Relay outputs • RT alarm • RT fault – Monitored outputs • Alarm • Fault • Horn – Freely programmable inputs/outputs	1 1 1 1 1 1 8	1 1 1 1 2 12 (7 ²⁾)	
Operating unit	integrated	integrated	
Display groups integrated, each with one red, green and yellow LED	–	–	
Display groups optional, each with one red, green and yellow LED	up to 96	up to 96	
Plug-in position for RS232, RS485 serial ports	2	2	
Ethernet connection RJ45	1	1	
Dimensions (WxHxD)	430x796x160 mm	430x796x260 mm	
Approvals – CPD – VdS – LPCB	0786-CPD-21328 G214021 126bn	0786-CPD-20983 G210984 126bn	

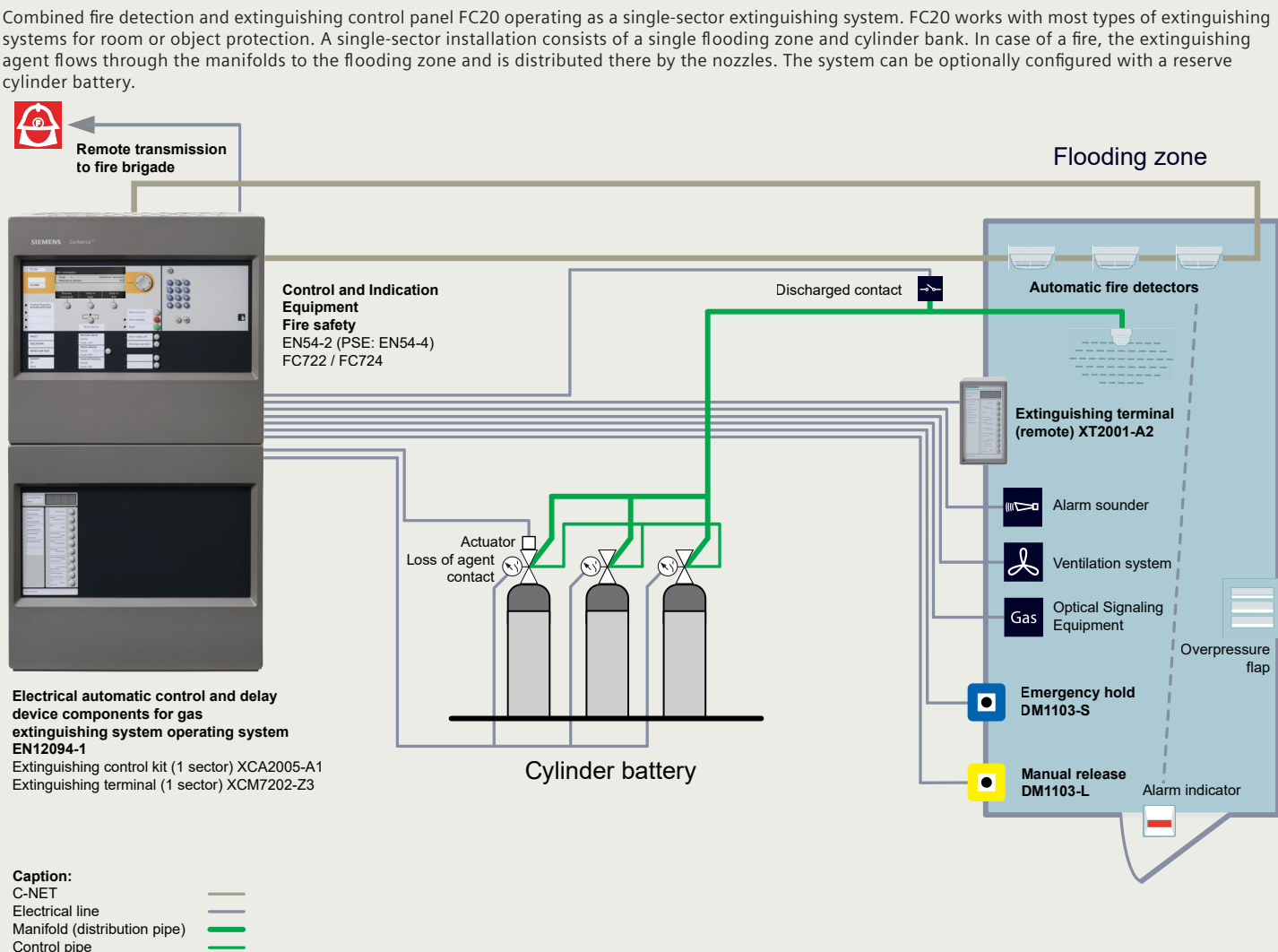
¹⁾ with additional input/output cards FC1208-A1

Cerberus Cloud Apps offering



Integrated Extinguishing control planning

Single-sector extinguishing



Cerberus PRO Planing Tool Panels, network and accessories

To enable remote operation with Cerberus-Remote, the PC has to be connected to an Ethernet switch of the backbone. Access to a certain panel in a cluster will be granted by installing an S1 license key into this panel.

Backbone (C-WEB/LAN)

Clusters can be networked via an Ethernet backbone, using industrial LAN technology. Siemens is the first manufacturer offering this as an EN 54-approved solution. With standard IT architecture, building structures and organizational processes can be ideally represented.

Characteristics of networking via backbone

- Ethernet switch to connect a cluster to the backbone
- Redundant transmission thanks to circular wiring
- Redundant connection possible due to two Ethernet switches
- Increased EMC protection thanks to fiber-optic cabling
- Easily programmable, EN 54-compliant system-wide control
- Configurable view of each panel
- All panels can be used as a router panel (for further information on FC726, please see separate documentation).

Key data

- Max. number of panels in EN 54 system: 64
- Max. number of panels in a cluster: 16
- Max. number of networkable clusters: 14
- Number of panels placed directly on backbone: 4*
- Number of panels with system-wide view: 5*
- Max. distance between clusters: 4 km
- Fiber optic multi mode: 40 km
- Fiber optic single mode: 40 km

* and more with relevant system topology

The following guidelines must be observed

- To fulfill the EN 54 norm, only 1 Ethernet switch is required to connect control panels with less than 512 fire detectors to the backbone.

Cluster (C-WEB/SAFEDLINK)

Via the powerful cluster, up to 32 panels can be networked (fire control panels and fire terminals).

Characteristics of networking via the system bus

- Wiring with two wires
- Redundant transmission thanks to circular wiring
- Increased safety due to degrade mode using a second network module
- No additional cabling necessary for degrade mode; even for systems with more than 512 fire detectors
- Configurable view of individual panels

Key data

- Max. number of networkable panels: 32
- Max. number of networkable panels if connected to a danger management system: 16
- Max. distance between panels with copper cable: 1 km
- with repeater: 2 km
- Max. distance between panels with fiber-optic cable: 4 km
- multi mode: 40 km
- single mode: 40 km
- Max. number of panels with system-wide view: 5

C-NET

The C-NET is a modern, multi-purpose bus system. It allows rapid, fail-safe communication between the Cerberus[™] PRO bus elements and the fire control panel.

Characteristics of networking via the detector bus

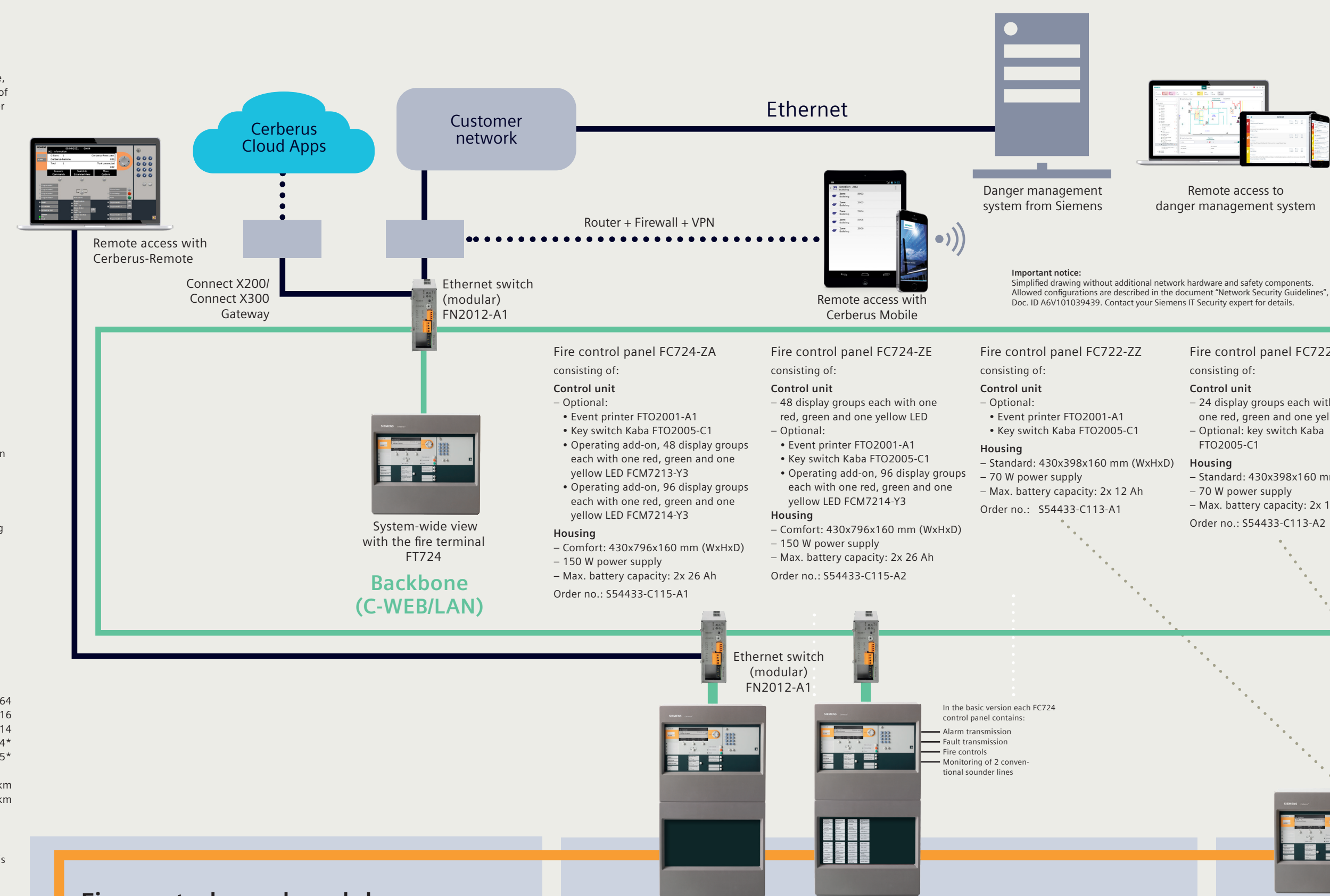
- Use of all cable types (shielded or unshielded)
- Integration of star-shaped cable networks without modifications to cable network
- No shielding necessary
- 2-wire loop
- Power supply to all bus elements via the C-NET (except transponder FDC0223, FDC723, LaserFOCUS, extinguishing control unit XC10 and ASD FDA221, FDA241)

Key data

- Up to 40 T-taps
- Up to 252 bus elements on one loop
- Cable lengths up to 3.3 km with up to 252 bus elements

Legend for the interfaces and networks:

Serial interfaces	
Backbone (C-WEB/LAN)	One optional RS232 and/or one RS485 interface (also freely combinable) per panel or fire terminal
Cluster (C-WEB/SAFEDLINK)	Network for connecting clusters
C-NET	Network for connecting panels
C-NET-Ex	Network for connecting Cerberus PRO addressable devices



Fire control panel modular FC726 / FC723

Description FC726 (modular)

FC726 is a modular fire control panel. It has the following features:

- 4 C-NET loops with 1.5 A line driver
- 5 slots for additional module bus cards
- Integrated inputs/outputs for peripherals
- Integrated control unit
- Integrated power supply
- Automatic configuration
- Networkability via backbone (C-WEB/LAN), cluster (C-WEB/SAFEDLINK) or Ethernet

Technical data

Basic configuration

- Number of loops/stubs: 4/8
- Optionally with loop extension: 8 loops/16 stubs

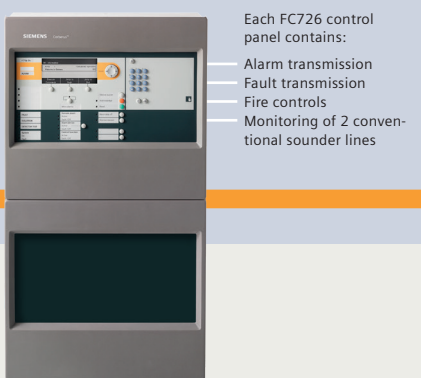
Modular extension

- Line card for 252 C-NET devices
- Line card for 512 SynoLOOP devices
- I/O cards with inputs/outputs (12)

Final configuration

- Number of addresses: max. 1,512
- Number of loops/stubs: 28/56

Cluster (C-WEB/SAFEDLINK)



Fire control panel FC726-ZA consisting of:

- Control unit
- Optional:
 - Event printer FTO2001-A1
 - Key switch Kaba FTO2005-C1
- Operating add-on, 48 display groups each with one red and one yellow LED FCM7211-Y3
- Operating add-on, 96 display groups each with one red and one yellow LED FCM7212-Y3

Housing:

- Eco: 430x796x260 mm (WxHxD)
- 150 W power supply
- Max. battery capacity: 2x 26 Ah

Order no.: S54433-C116-A1

Description FC723 (modular)

FC723 is a modular fire control panel. It has the following features:

- 2 C-NET loops with 1.5 A line driver
- 2 slots for additional module bus cards
- Integrated inputs/outputs for peripherals
- Integrated control unit
- Integrated power supply
- Automatic configuration
- Networkability via backbone (C-WEB/LAN), cluster (C-WEB/SAFEDLINK) or Ethernet

Technical data

Basic configuration

- Number of loops/stubs: 2/4
- Optionally with loop extension: 4 loops/8 stubs

Modular extension

- Line card for 252 C-NET devices
- Line card for 512 SynoLOOP devices
- I/O cards with inputs/outputs (12)

Final configuration

- Number of addresses: max. 756
- Number of loops/stubs: 12/24



Fire control panel FC723-ZA consisting of:

- Control unit
- Optional:
 - Event printer FTO2001-A1
 - Key switch Kaba FTO2005-C1
- Operating add-on, 48 display groups each with one red and one yellow LED FCM7211-Y3
- Operating add-on, 96 display groups each with one red and one yellow LED FCM7212-Y3

Housing:

- Comfort: 430x796x160 mm (WxHxD)
- 150 W power supply
- Max. battery capacity: 2x 26 Ah

Order no.: S54433-C114-A1

Fire control panel FC724 (4-loop)

Description

The FC724 is a compact 4-loop fire control panel. It has the following features:

- 4 C-NET loops with 1.5 A line driver
- Integrated inputs/outputs for peripherals
- Integrated control unit
- Integrated power supply
- Automatic configuration
- Networkability via backbone (C-WEB/LAN), cluster (C-WEB/SAFEDLINK) or Ethernet

Technical data

Basic configuration

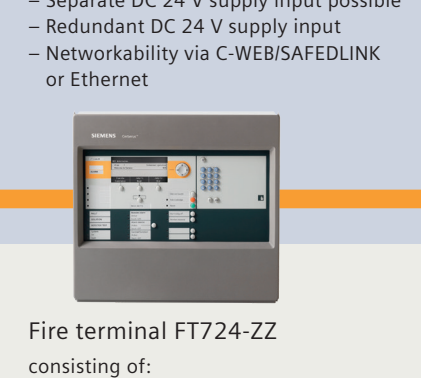
- Number of loops/stubs: 4/8
- Optionally with loop extension: 8 loops/16 stubs

Modular extension

- Line card for 252 C-NET devices
- Line card for 512 SynoLOOP devices
- I/O cards with inputs/outputs (12)

Final configuration

- Number of addresses: max. 1,512
- Number of loops/stubs: 28/56



Fire control panel FC724-ZAG consisting of:

- Control unit
- Optional:
 - Event printer FTO2001-A1
 - Key switch Kaba FTO2005-C1
- Operating add-on, 48 display groups each with one red, green and one yellow LED FCM7211-Y3
- Operating add-on, 96 display groups each with one red, green and one yellow LED FCM7214-Y3

Housing:

- Comfort: 430x796x160 mm (WxHxD)
- 150 W power supply
- Max. battery capacity: 2x 26 Ah

Order no.: S54433-C115-A2

Fire control panel FC722-ZAG consisting of:

Control unit

- Optional:
 - Event printer FTO2001-A1
 - Key switch Kaba FTO2005-C1
- Operating add-on, 48 display groups each with one red, green and one yellow LED FCM7211-Y3
- Operating add-on, 96 display groups each with one red, green and one yellow LED FCM7214-Y3

Housing:

- Comfort: 430x796x160 mm (WxHxD)
- 150 W power supply
- Max. battery capacity: 2x 26 Ah

Order no.: S54400-C38-A1

Cloud connectivity

– X200 Gateway



Fire control panel FC722-ZAG consisting of:

- Control unit
- Optional:
 - Event printer FTO2001-A1
 - Key switch Kaba FTO2005-C1
- Operating add-on, 48 display groups each with one red, green and one yellow LED FCM7211-Y3
- Operating add-on, 96 display groups each with one red, green and one yellow LED FCM7214-Y3

Housing:

- Comfort: 430x796x160 mm (WxHxD)
- 150 W power supply
- Max. battery capacity: 2x 26 Ah

Order no.: S54433-C113-A3

Fire control panel FC722-ZZ consisting of:

Control unit

- Optional:
 - Event printer FTO2001-A1
 - Key switch Kaba FTO2005-C1
- Operating add-on, 48 display groups each with one red, green and one yellow LED FCM7211-Y3
- Operating add-on, 96 display groups each with one red, green and one yellow LED FCM7214-Y3

Housing:

- Comfort: 430x796x160 mm (WxHxD)
- 150 W power supply
- Max. battery capacity: 2x 26 Ah

Order no.: S54433-C113-A2

Cloud connectivity

– X200 Gateway



Fire control panel FC722-ZZ consisting of:

- Control unit
- Optional:
 - Event printer FTO2001-A1
 - Key switch Kaba FTO2005-C1
- Operating add-on, 48 display groups each with one red, green and one yellow LED FCM7211-Y3
- Operating add-on, 96 display groups each with one red, green and one yellow LED FCM7214-Y3

Housing:

- Comfort: 430x796x160 mm (WxHxD)
- 150 W power supply
- Max. battery capacity: 2x 26 Ah

Order no.: S54433-C113-A3

Fire control panel FC722-ZE consisting of:

Control unit

- Optional:
 - Event printer FTO2001-A1
 - Key switch Kaba FTO2005-C1
- Operating add-on, 48 display groups each with one red, green and one yellow LED FCM7211-Y3
- Operating add-on, 96 display groups each with one red, green and one yellow LED FCM7214-Y3

Housing:

- Comfort: 430x796x160 mm (WxHxD)
- 150 W power supply
- Max. battery capacity: 2x 26 Ah

Order no.: S54433-C113-A4

Cloud connectivity

– X200 Gateway



Fire control panel FC722-ZE consisting of:

- Control unit
- Optional:
 - Event printer FTO2001-A1
 - Key switch Kaba FTO2005-C1
- Operating add-on, 48 display groups each with one red, green and one yellow LED FCM7211-Y3
- Operating add-on, 96 display groups each with one red, green and one yellow LED FCM7214-Y3

Housing:

- Comfort: 430x796x160 mm (WxHxD)
- 150 W power supply
- Max. battery capacity: 2x 26 Ah

Order no.: S54433-C113-A4

Fire control panel FC721 (1-loop)

Description

The FC721 is a compact fire control panel. It has the following features:

- 1 C-NET loop
- Integrated inputs/outputs for peripherals
- Integrated control unit
- Integrated power supply
- Automatic configuration
- Networkability via backbone (C-WEB/LAN), cluster (C-WEB/SAFEDLINK) or Ethernet

Technical data

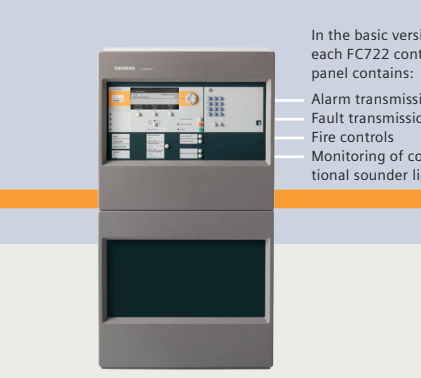
C-NET detector lines

- Number of addresses: max. 252
- Number of integrated loops/stubs: 2/4
- Optionally with loop extension: 4 loops/8 stubs

Inputs and outputs

- 1 relay output for RT alarm
- 1 relay output for RT fault
- 1 monitored alarm output
- 1 monitored fault output
- 1 monitored sounder output (1 A)
- 8 configurable inputs/outputs DC 24 V
- 1 Ethernet connection (RJ45)

Optional: sounder module for splitting the sounder line output into 4 monitored outputs (2 A)



Fire control panel FC721 consisting of:

- Control unit
- Optional:
 - Event printer FTO2001-A1
 - Key switch Kaba FTO2005-C1
- Operating add-on, 48 display groups each with one red, green and one yellow LED FCM7211-Y3
- Operating add-on, 96 display groups each with one red, green and one yellow LED FCM7214-Y3

Housing:

- Eco: 430x398x80 mm (WxHxD)
- 70 W power supply
- Max. battery capacity: 2x 7 Ah

Order no.: S54400-C37-A1

Fire control panel FC722-ZZG consisting of:

Control unit

- Optional:
 - Event printer FTO2001-A1
 - Key switch Kaba FTO2005-C1
- Operating add-on, 48 display groups each with one red, green and one yellow LED FCM7211-Y3
- Operating add-on, 96 display groups each with one red, green and one yellow LED FCM7214-Y3

Housing:

- Comfort: 430x796x160 mm (WxHxD)
- 150 W power supply
- Max. battery capacity: 2x 26 Ah

Order no.: S54400-C37-A1

Cloud connectivity

– X200 Gateway



Fire control panel FC722-ZZG consisting of:

- Control unit
- Optional:
 - Event printer FTO2001-A1
 - Key switch Kaba FTO2005-C1
- Operating add-on, 48 display groups each with one red, green and one yellow LED FCM7211-Y3
- Operating add-on, 96 display groups each with one red, green and one yellow LED FCM7214-Y3

Housing:

- Comfort: 430x796x160 mm (WxHxD)
- 150 W power supply
- Max. battery capacity: 2x 26 Ah

Order no.: S54400-C37-A1



Fire control panel FC722-ZZG consisting of:

- Control unit
- Optional:
 - Event printer FTO2001-A1
 - Key switch Kaba FTO2005-C1
- Operating add-on, 48 display groups each with one red, green and one yellow LED FCM7211-Y3
- Operating add-on, 96 display groups each with one red, green and one yellow LED FCM7214-Y3

Housing:

- Comfort: 430x796x160 mm (WxHxD)
- 150 W power supply
- Max. battery capacity: 2x 26 Ah

Order no.: S54400-C37-A1

Fire control panel FC722-ZZG consisting of:

Control unit

- Optional:
 - Event printer FTO2001-A1
 - Key switch Kaba FTO2005-C1
- Operating add-on, 48 display groups each with one red, green and one yellow LED FCM7211-Y3
- Operating add-on, 96 display groups each with one red, green and one yellow LED FCM7214-Y3

Housing:

- Comfort: 430x796x160 mm (WxHxD)
- 150 W power supply
- Max. battery capacity: 2x 26 Ah

Order no.: S54400-C37-A1

Cloud connectivity

– X200 Gateway



Fire control panel FC722-ZZG consisting of:

- Control unit
- Optional:
 - Event printer FTO2001-A1
 - Key switch Kaba FTO2005-C1
- Operating add-on, 48 display groups each with one red, green and one yellow LED FCM7211-Y3
- Operating add-on, 96 display groups each with one red, green and one yellow LED FCM7214-Y3

Housing:

- Comfort: 430x796x160 mm (WxHxD)
- 150 W power supply
- Max. battery capacity: 2x 26 Ah

Order no.: S54400-C37-A1

Fire control panel FC722-ZZG consisting of:

Control unit

- Optional:
 - Event printer FTO2001-A1
 - Key switch Kaba FTO2005-C1
- Operating add-on, 48 display groups each with one red, green and one yellow LED FCM7211-Y3
- Operating add-on, 96 display groups each with one red, green and one yellow LED FCM7214-Y3

Housing:

- Comfort: 430x796x160 mm (WxHxD)
- 150 W power supply
- Max. battery capacity: 2x 26 Ah

Order no.: S54400-C37-A1

Cloud connectivity

– X200 Gateway



Fire control panel FC722-ZZG consisting of:

- Control unit
- Optional:
 - Event printer FTO2001-A1
 - Key switch Kaba FTO2005-C1
- Operating add-on, 48 display groups each with one red, green and one yellow LED FCM7211-Y3
- Operating add-on, 96 display groups each with one red, green and one yellow LED FCM7214-Y3

Housing:

- Comfort: 430x796x160 mm (WxHxD)
- 150 W power supply
- Max. battery capacity: 2x 26 Ah

Order no.: S54400-C37-A1

Fire control panel FC722-ZZG consisting of:

Control unit

- Optional:
 - Event printer FTO2001-A1
 - Key switch Kaba FTO2005-C1
- Operating add-on, 48 display groups each with one red, green and one yellow LED FCM7211-Y3
- Operating add-on, 96 display groups each with one red, green and one yellow LED FCM7214-Y3

Housing:

- Comfort: 430x796x160 mm (WxHxD)
- 150 W power supply
- Max. battery capacity: 2x 26 Ah

Order no.: S54400-C37-A1

Cloud connectivity

– X200 Gateway



Fire control panel FC722-ZZG consisting of:

- Control unit
- Optional:
 - Event printer FTO2001-A1
 - Key switch Kaba FTO2005-C1
- Operating add-on, 48 display groups each with one red, green and one yellow LED FCM7211-Y3
- Operating add-on, 96 display groups each with one red, green and one yellow LED FCM7214-Y3

Housing:

- Comfort: 430x796x160 mm (WxHxD)
- 150 W power supply
- Max. battery capacity: 2x 26 Ah

Order no.: S54400-C37-A1

Fire control panel FC722-ZZG consisting of:

Control unit

- Optional:
 - Event printer FTO2001-A1
 - Key switch Kaba FTO2005-C1
- Operating add-on, 48 display groups each with one red, green and one yellow LED FCM7211-Y3
- Operating add-on, 96 display groups each with one red, green and one yellow LED FCM7214-Y3

Housing:

- Comfort: 430x796x160 mm (WxHxD)
- 150 W power supply
- Max. battery capacity: 2x 26 Ah

Order no.: S54400-C37-A1

Cloud connectivity

– X200 Gateway



Fire control panel FC722-ZZG consisting of:

- Control unit
- Optional:
 - Event printer FTO2001-A1
 - Key switch Kaba FTO2005-C1
- Operating add-on, 48 display groups each with one red, green and one yellow LED FCM7211-Y3
- Operating add-on, 96 display groups each with one red, green and one yellow LED FCM7214-Y3

Housing:

- Comfort: 430x796x160 mm (WxHxD)
- 150 W power supply
- Max. battery capacity: 2x 26 Ah

Order no.: S54400-C37-A1

Fire control panel FC722-ZZG consisting of:

Control unit

- Optional:
 - Event printer FTO2001-A1
 - Key switch Kaba FTO2005-C1
- Operating add-on, 48 display groups each with one red, green and one yellow LED FCM7211-Y3
- Operating add-on, 96 display groups each with one red, green and one yellow LED FCM7214-Y3

Housing:

- Comfort: 430x796x160 mm (WxHxD)
- 150 W power supply
- Max. battery capacity: 2x 26 Ah

Order no.: S54400-C37-A1

Cloud connectivity

– X200 Gateway



Fire control panel FC722-ZZG consisting of:

- Control unit
- Optional:
 - Event printer FTO2001-A1
 - Key switch Kaba FTO2005-C1
- Operating add-on, 48 display groups each with one red, green and one yellow LED FCM7211-Y3
- Operating add-on, 96 display groups each with one red, green and one yellow LED FCM7214-Y3

Housing:

- Comfort: 430x796x160 mm (WxHxD)
- 150 W power supply
- Max. battery capacity: 2x 26 Ah

Order no.: S54400-C37-A1

Fire control panel FC722-ZZG consisting of:

Control unit

- Optional:
 - Event printer FTO2001-A1
 - Key switch Kaba FTO2005-C1
- Operating add-on, 48 display groups each with one red, green and one yellow LED FCM7211-Y3
- Operating add-on, 96 display groups each with one red, green and one yellow LED FCM7214-Y3

Housing:

- Comfort: 430x796x160 mm (WxHxD)
- 150 W power supply
- Max. battery capacity: 2x 26 Ah

Order no.: S54400-C37-A1

Cloud connectivity

– X200 Gateway



Fire control panel FC722-ZZG consisting of:

- Control unit
- Optional:
 - Event printer FTO2001-A1
 - Key switch Kaba FTO2005-C1
- Operating add-on, 48 display groups each with one red, green and one yellow LED FCM7211-Y3
- Operating add-on, 96 display groups each with one red, green and one yellow LED FCM7214-Y3

Housing:

- Comfort: 430x796x160 mm (WxHxD)
- 150 W power supply
- Max. battery capacity: 2x 26 Ah

Order no.: S54400-C37-A1

Fire control panel FC722-ZZG consisting of:

Control unit

- Optional:
 - Event printer FTO2001-A1
 - Key switch Kaba FTO2005-C1
- Operating add-on, 48 display groups each with one red, green and one yellow LED FCM7211-Y3
- Operating add-on, 96 display groups each with one red, green and one yellow LED FCM7214-Y3

Housing:

- Comfort: 430x796x160 mm (WxHxD)
- 150 W power supply
- Max. battery capacity: 2x 26 Ah

Order no.: S54400-C37-A1

Cloud connectivity